

## Configuring a PC to Access a UL Wireless Public Network Point

Wireless public access points are available from:

- Library Boardroom (Staff Only)
- Cafe Allegro (the Foundation Building)
- Atrium (the Foundation Building)
- Library - European Documentation Centre
- Student Union Postgrad Common Room
- Phase 1A - canteen
- Schuman Building - Level 2 MBA space.
- Staff Common Room in the Millstream Building and associated meeting rooms.MC2-003,4,5. (Staff Only)
- Engineering Research Building - ERB-006 and 7 (weak signal in 7), ER0-008, ER0-009.
- Plassey House Board Room, Wood Room, Maunsell Room. (Staff Only)
- Cafe Sportif - (PESS Building).

Please Note that you must use a proxy server when connecting to the UL Wireless Network. Instructions can be found at [Set Internet Explorer to use a Proxy Server](#)

### What do I need to connect to the wireless network?

In order to connect to the **UL Wireless network** you will need an **802.11b** compliant wireless card. The examples shown are for the **Lucent Orinoco / Avaya** card and configuration under **Windows XP**. For other cards/ systems use the following settings:

- Network Name/ SSID: **ulwireless**
- Turn off **WEP encryption**, any other authentication
- Connection is to a network infrastructure and not a PC-to-PC network
- **DHCP** should be enabled for the wireless network adaptor

### Configuring your Lucent Orinoco/ Avaya card for Windows 95, 98, ME, 2000

- Open up the configuration options for your wireless card.
- Set the SSID/ Network Name to '**ulwireless**'. (Case-Sensitive) (Figure 1)

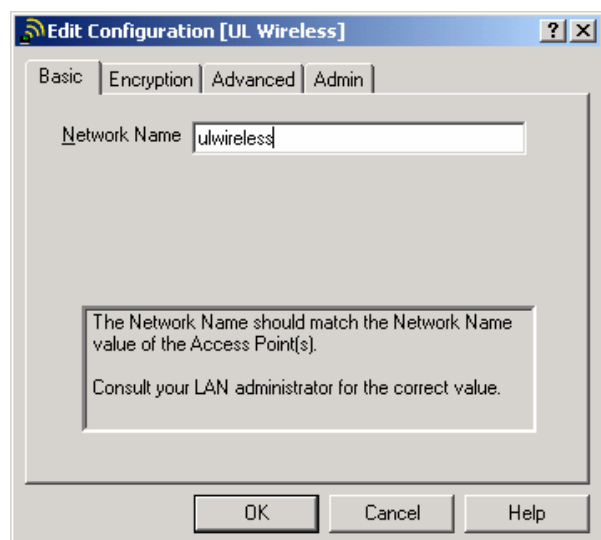
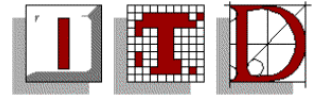


Figure 1



- The **UL Wireless network** does not use encryption, make sure that encryption is not enabled and that you are not using any encryption keys. (Figure 2)
- Click '**OK**' to save your settings.

**Note:** In order to obtain an IP address DHCP must be enabled for your network card.

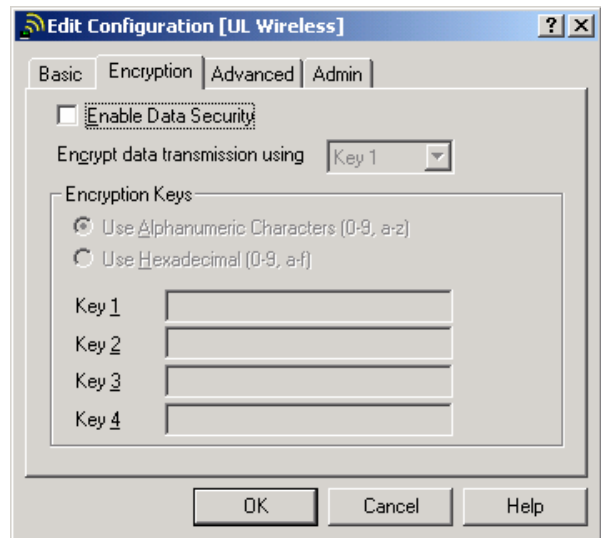
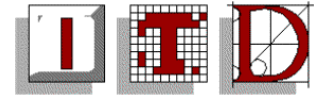


Figure 2

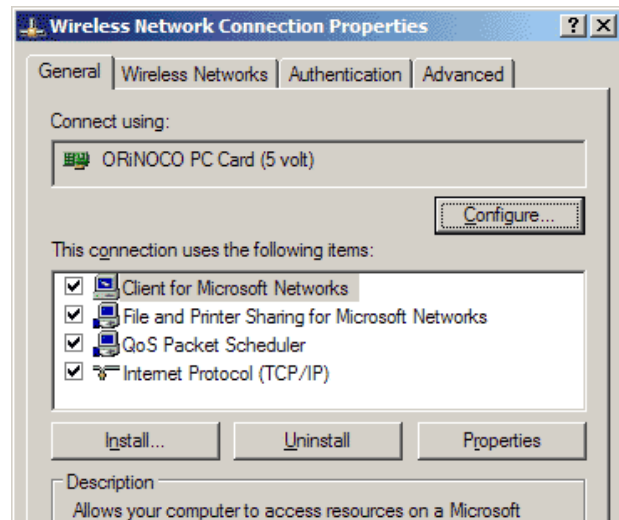


## Configuring Wireless Networking with Windows XP

Windows XP Home and Professional usually do not require client utilities as XP can handle the configuration of wireless cards.

- Click on the "Start" menu and select "Control Panel," then click on "Network and Internet Connections". Double-click on the option that says "Network Connections".
- Right-click on the "Wireless Network Connection", click on the "Properties" option to load a window that looks like this (Figure 3)

Figure 3



- Click on the 'Wireless Networks' tab. Make sure that "Use Windows to configure my wireless network settings" is checked. Note: you can use other methods of configuration (manufacturer-specific utilities), but they must be Windows XP compatible.
- To create a new wireless connection click on the 'Add...' button. Enter the Network Name as 'ulwireless' (Case-Sensitive). Also make sure that the "Data encryption" and "Network Authentication" options are unchecked. At the bottom of the window, the "This is a computer-to-computer..." option should be unchecked. Click the "OK" button. (Figure 4)
- On the "Authentication" tab, make sure that "Enable network access control using IEEE 802.1X" is unchecked. When finished, click "OK"

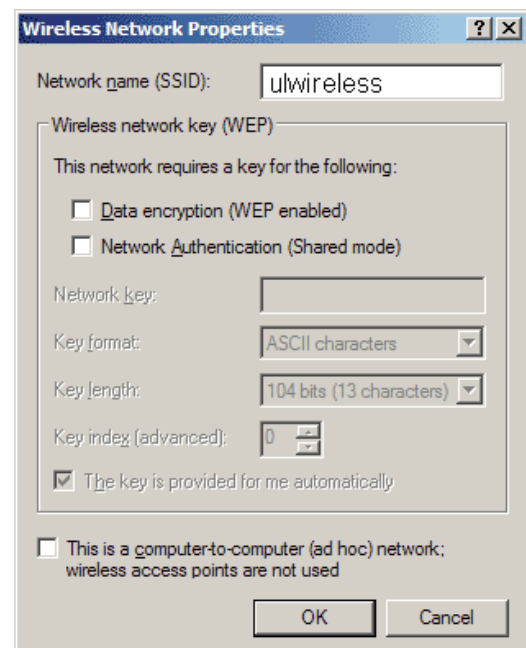


Figure 4

Note: In order to obtain an IP address DHCP must be enabled for your network card.