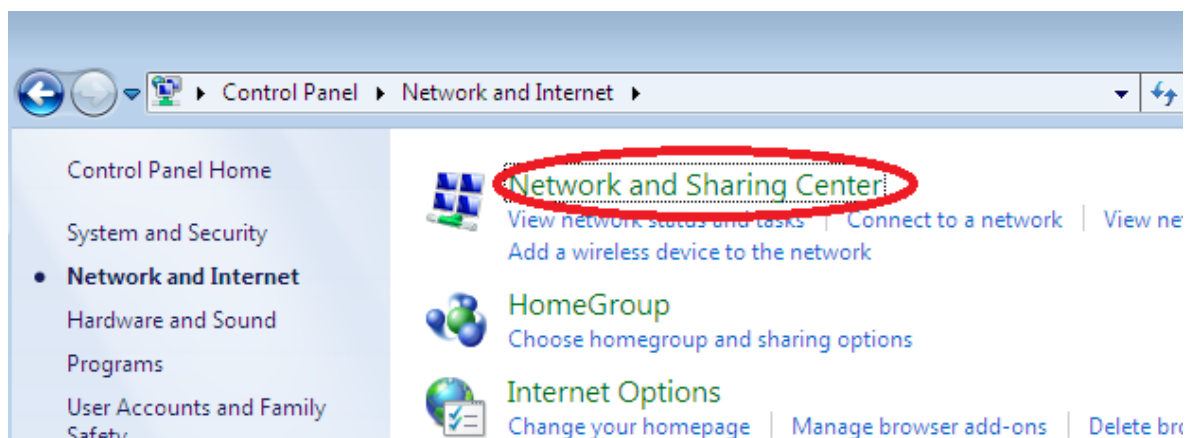
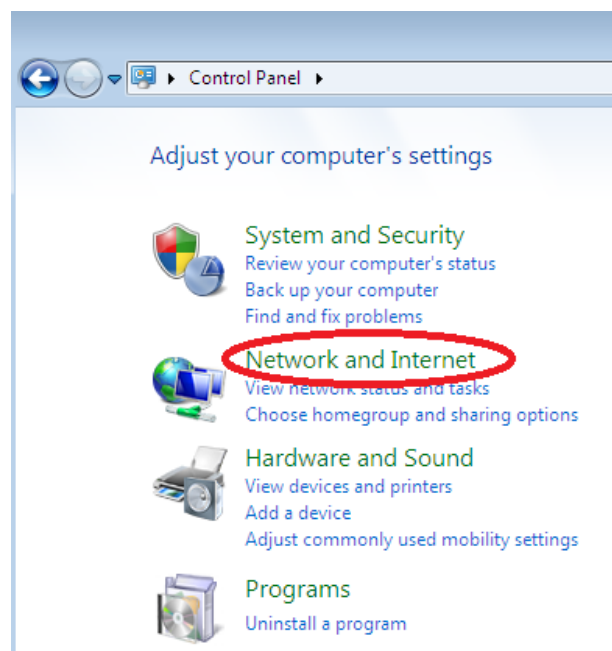


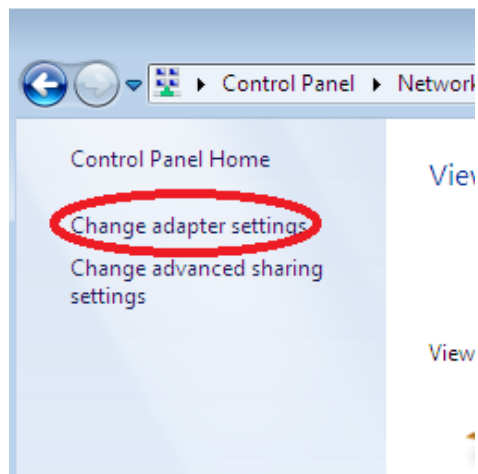
How to Connect to wireless using Windows7

Prerequisites

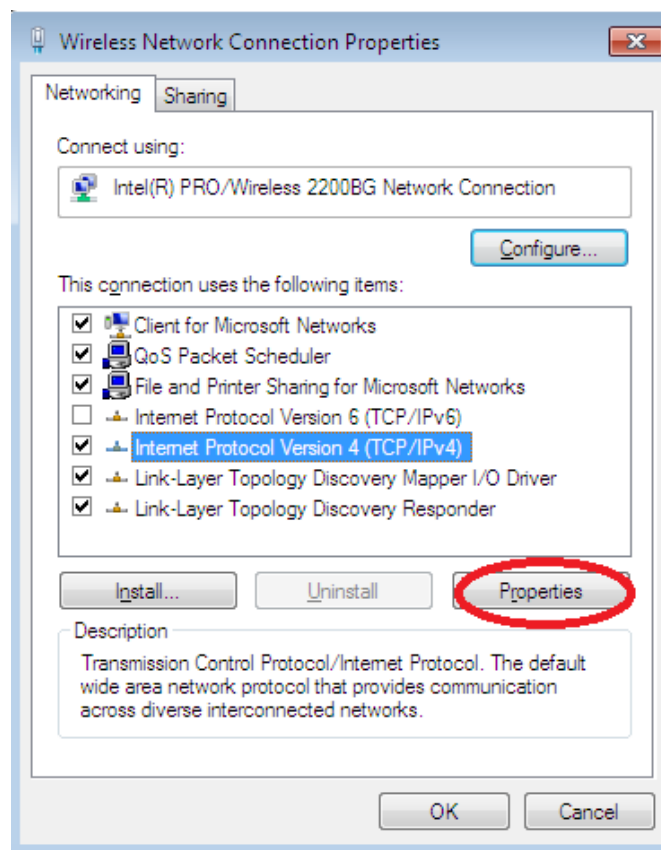
1. There may be a wireless hardware switch on your laptop please make sure this switch is turned on.
 2. Make sure your network card is set for DHCP
- Go to Start/Control Panel/Network and Internet and click on Network and Sharing Center



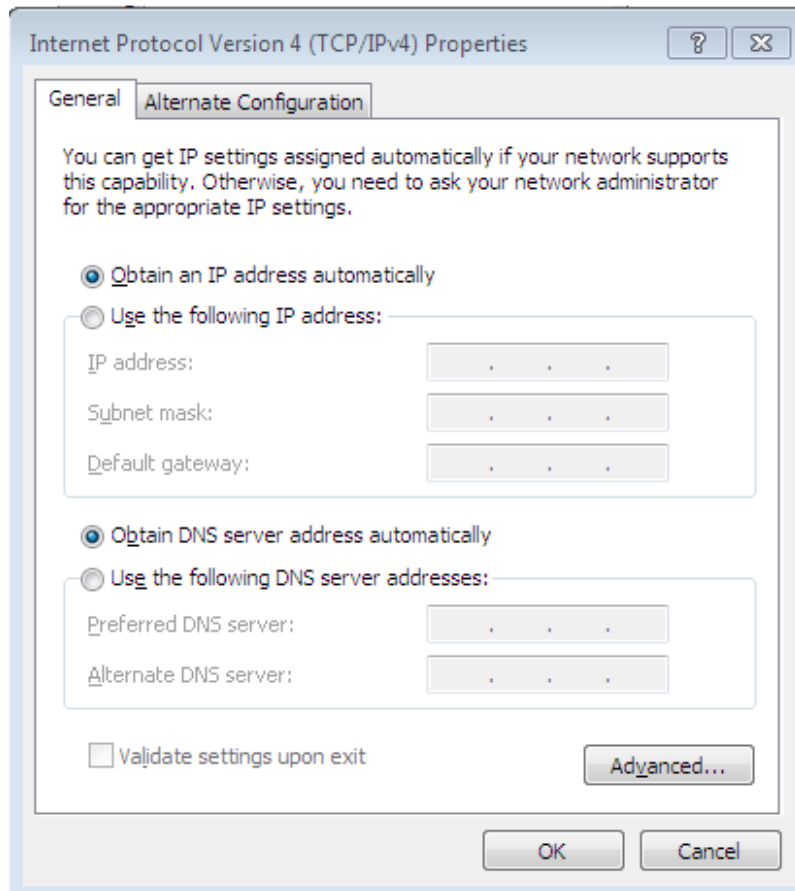
- Click on Change Adapter Settings and find your wireless network adapter



- Right Click on your Wireless Network Adapter and go to Properties



- Make sure 'Obtain an IP address automatically' and 'Obtain DNS server address automatically' are selected.



- Once this is set and your wireless switch is turned on, you can browse for new wireless networks.
- You can do this by clicking on the screen icon on the bottom right of the system Tray.



- This will tell you what wireless networks are within range of your laptop.
- The SSID is ulwireless and it is open access with no authentication. Select ulwireless and click on Connect.

