
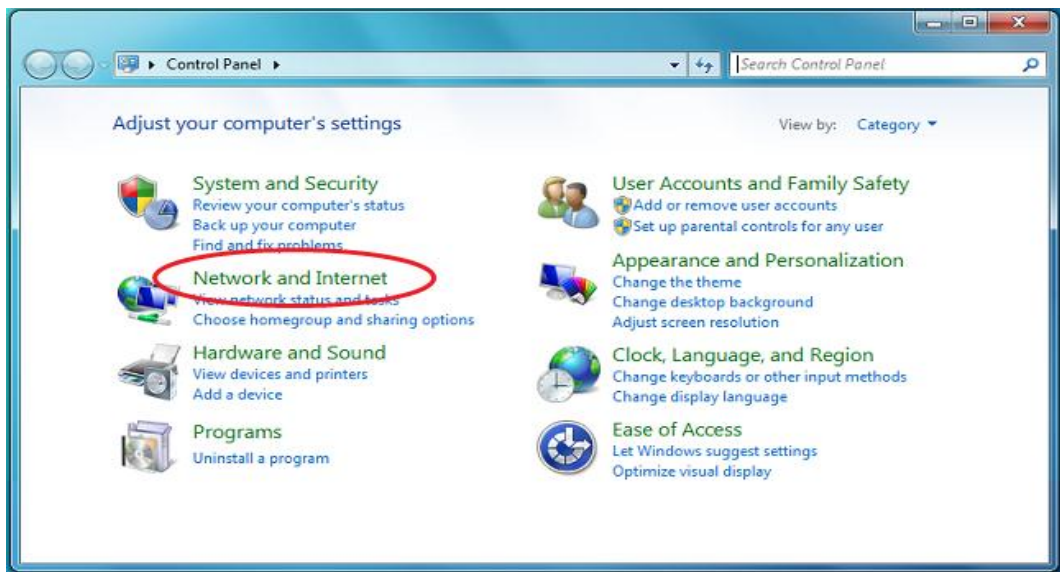


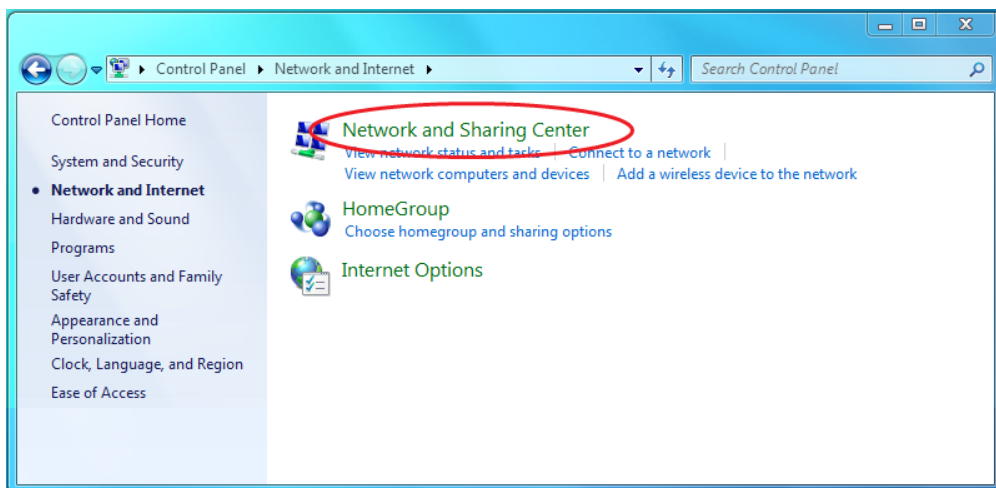
# Connecting to ULsecure WiFi with Windows 7

The following instructions apply to using the ULsecure wireless service on Microsoft windows 7 machines. If you find an error in the instructions, please contact [service.desk@ul.ie](mailto:service.desk@ul.ie)

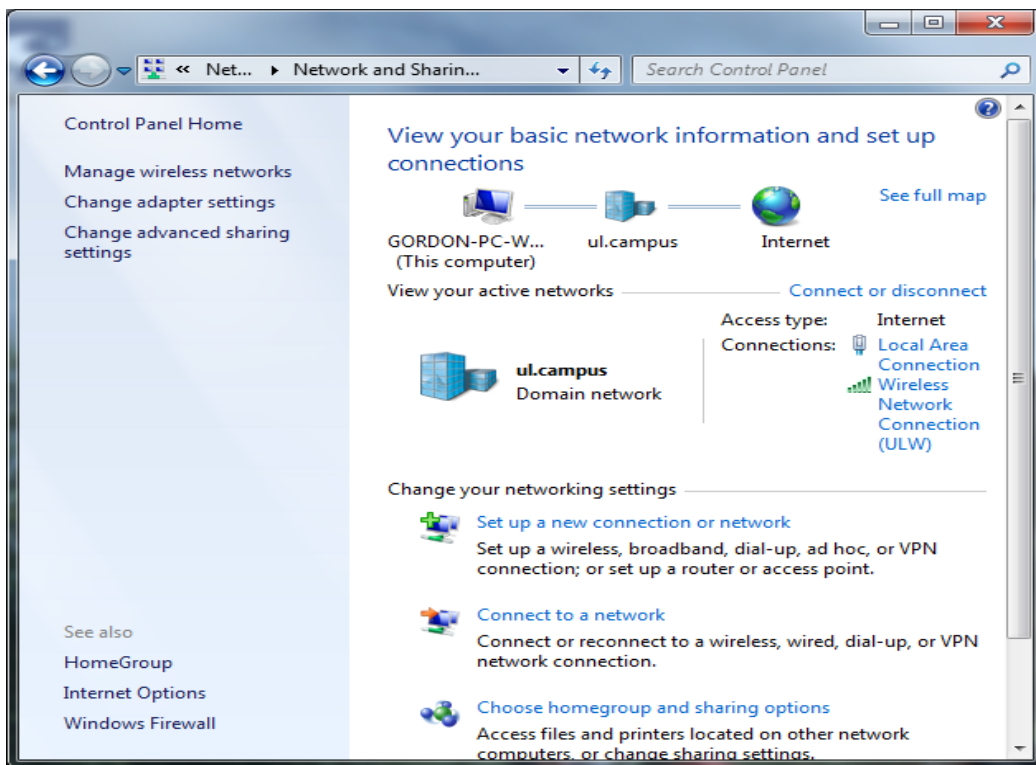
1. Click **START** button   
Click **Control Panel**.  
In the **Control Panel**, select **Network and internet**



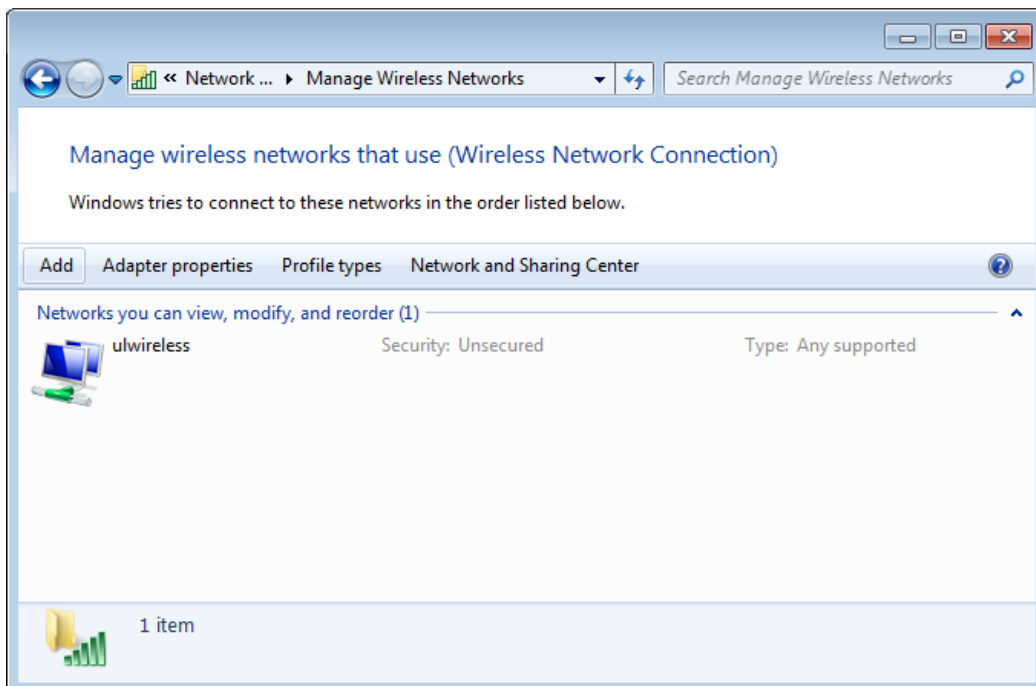
2. In the **Network and Internet** panel, click on **Network and Sharing Centre**



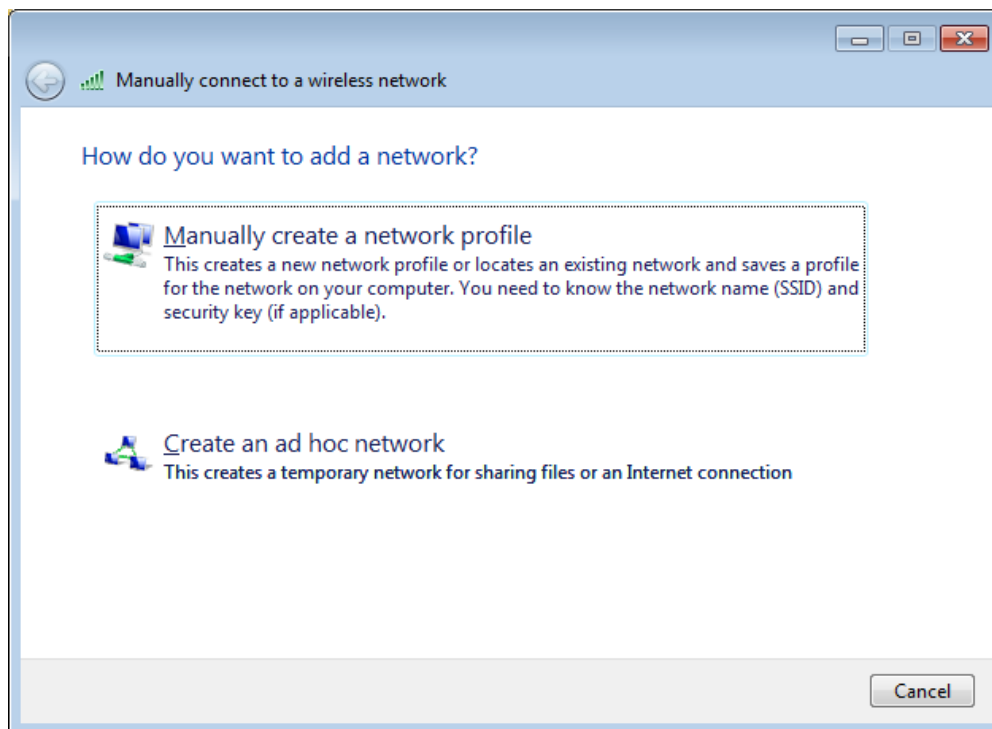
3. In the **Network and Sharing centre**, select **Manage wireless networks**



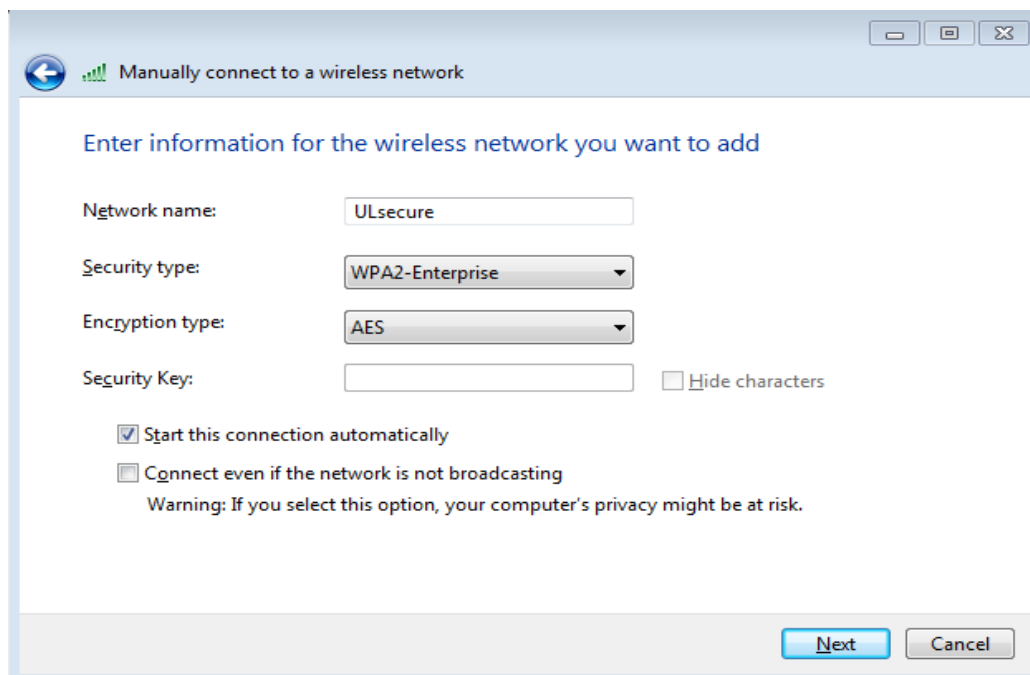
4. Select **Add**



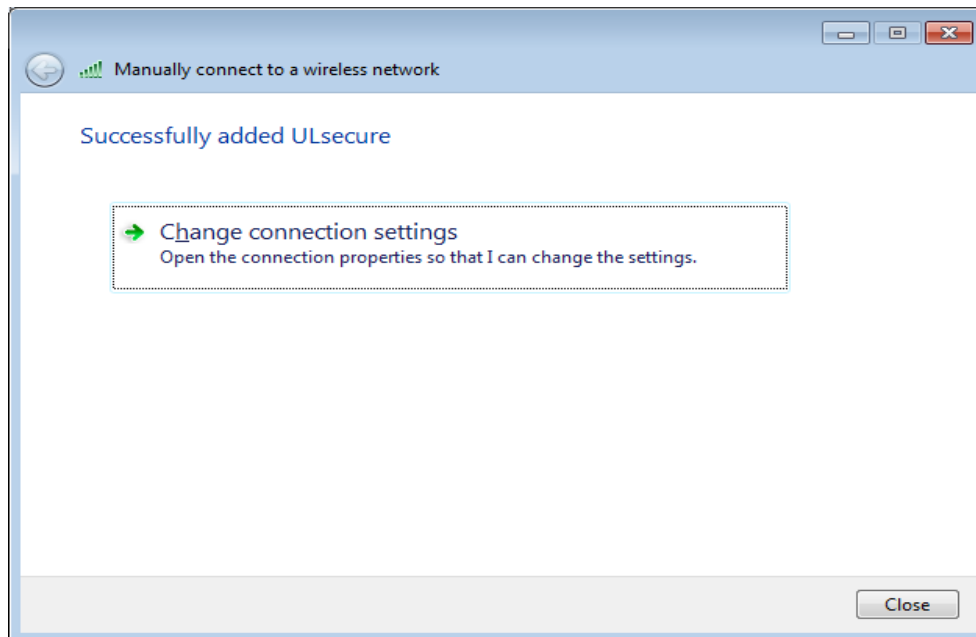
5. Click **Manually create a network profile**



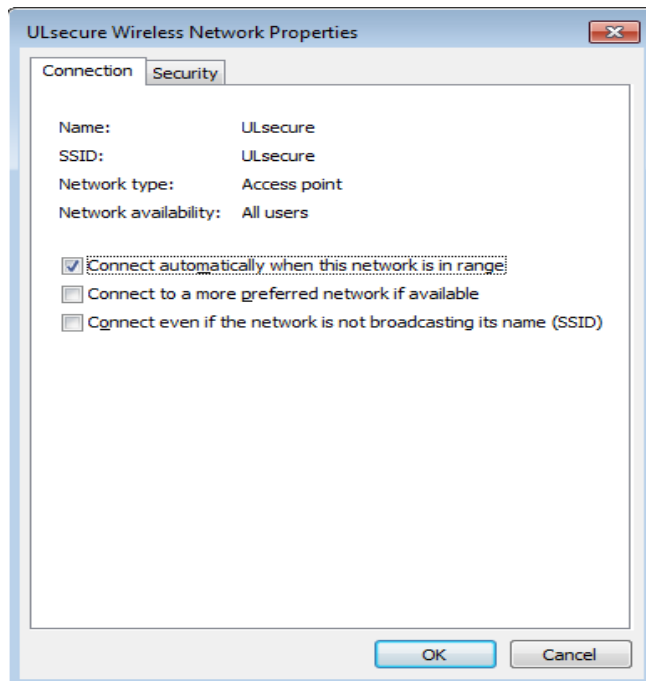
6. Enter Required Info  
Network Name: **ULsecure** - ( N.B. uppercase UL, lowercase secure, no spaces)  
Security Type: **WPA2-Enterprise**  
Encryption Type: **AES**  
Click **NEXT**



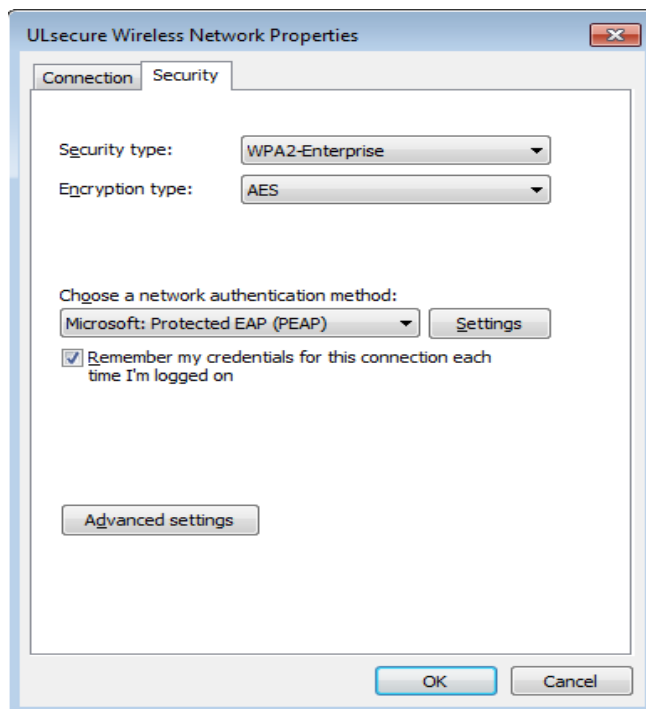
7. The next screen will say that the network has been configured. There are still more settings however, so select **Change Connection Settings**



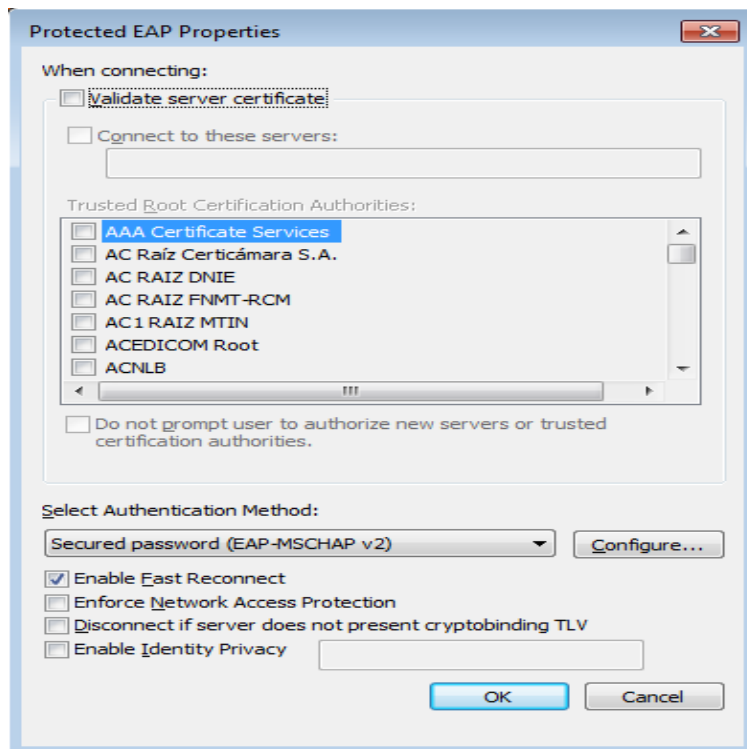
8. The initial screen will be set to the **Connection** tab  
Make sure it is set as follows:



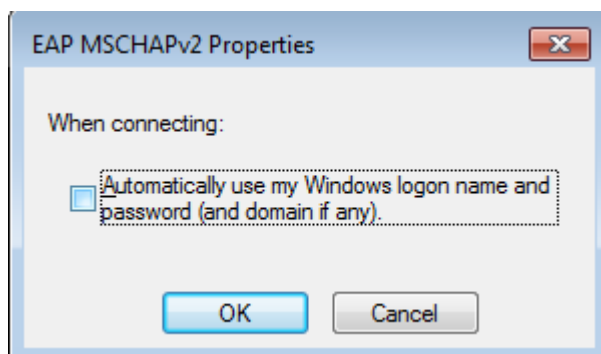
9. Select the **Security** tab  
Click the **Settings** button  
Settings Button is located next to the **Microsoft: Protected EAP (PEAP)** option,



- Protected EAP properties will open  
Un-check the **Validate server certificate** check-box  
Click the **Configure** button.  
Button located next to the **Secured password (EAP-MSCHAP)** option

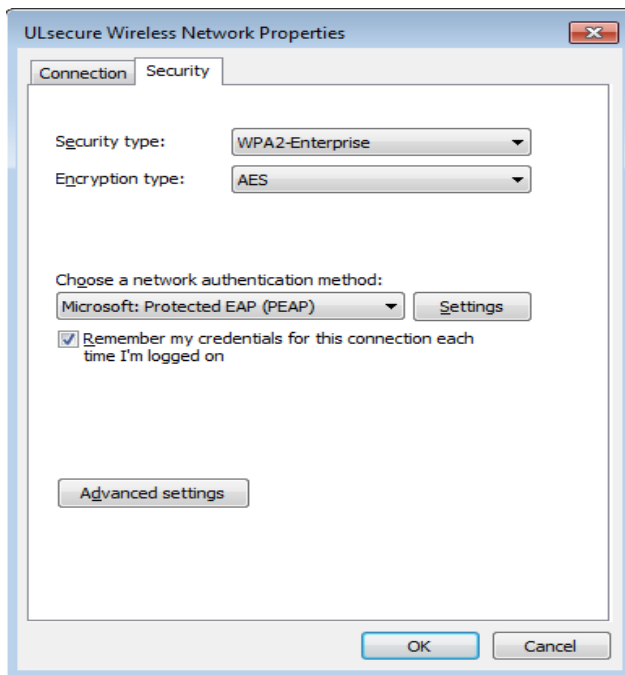


- Un-check the checkbox **Automatically use my Windows logon name & password.**  
Click **OK**

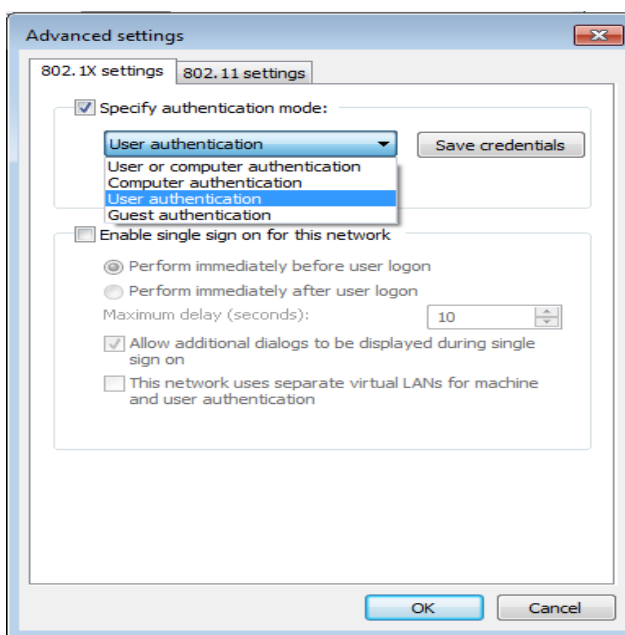


- Click **OK** (on Protected EAP Properties Window)

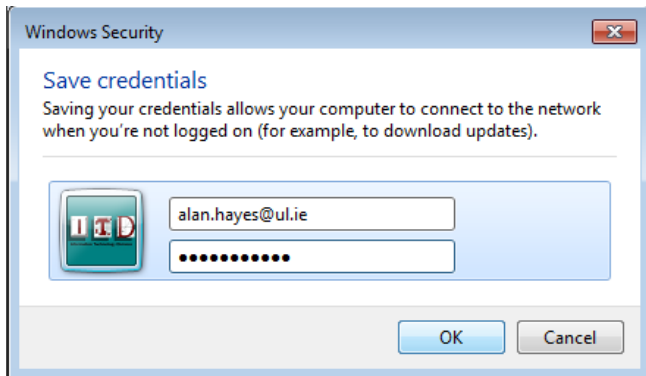
13. This will take you back to the **ULsecure Wireless Network Properties** window  
Click **Advanced Settings**



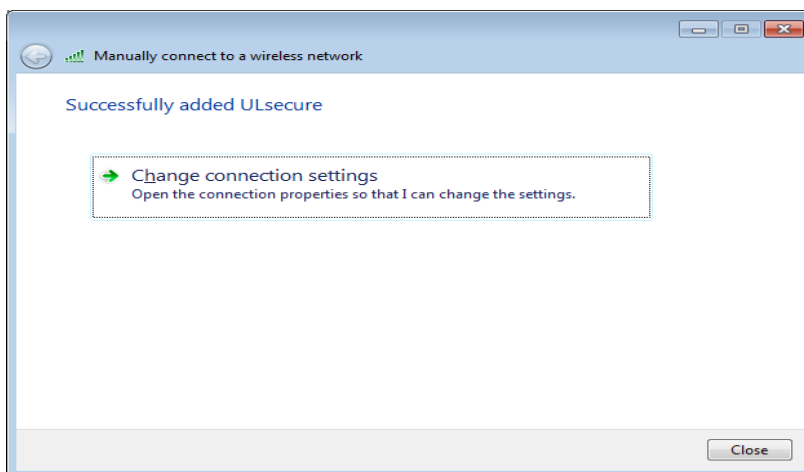
14. Tick **Specify authentication Mode** checkbox  
Select **User authentication** from drop-down list  
Click **Save Credentials** button



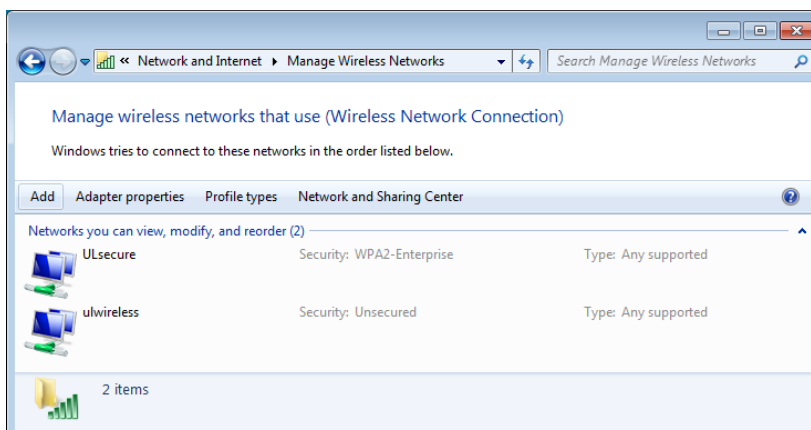
15. Enter users **UL email address** in top text field (**N.B. not your username**)  
Enter users **UL network password** in bottom text box  
Click **OK** button



16. Click **OK** button on advanced settings window  
(see screenshot number 14)
17. Click OK on **ULsecure Wireless Network Properties** window
18. Click **Close** button

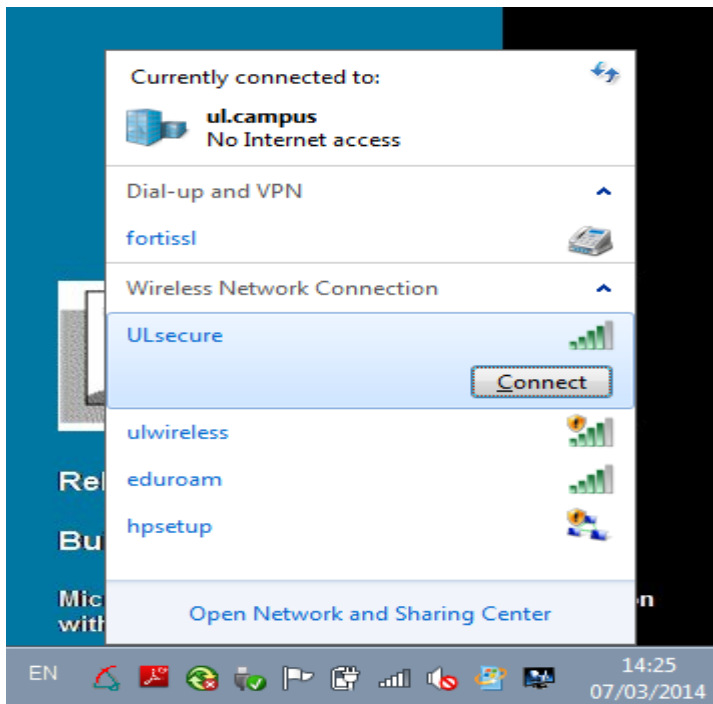


19. ULsecure WiFi network connection is now setup  
Close window with RED X button





20. You may now connect using the icon on system tray (bottom right of screen)  
Single click on **Network icon**  
Single click on **ULsecure**  
Click **Connect** button



21. A notification that you are connected should display

