

Eduroam Configuration Assistant Tool (CAT)

The Eduroam CAT tool is a customised installer which will configure your wireless card for access to the eduroam wireless service. The link to the download is located here

<https://cat.eduroam.org/?idp=789&profile=1307>

The screenshot shows a web browser window displaying the Eduroam Configuration Assistant Tool (CAT) website. The browser's address bar shows the URL <https://cat.eduroam.org/?idp=789&profile=1307>. The website header includes the text "Welcome to eduroam CAT" and "eduroam Configuration Assistant Tool" along with the eduroam logo. A navigation bar lists various languages: [View this page in](#) [Català](#) [Deutsch](#) [English\(GB\)](#) [Español](#) [Euskara](#) [Français](#) [Galego](#) [Hrvatski](#) [Italiano](#) [Norsk](#) [Polski](#) [Português](#) [Slovenčina](#) [Slovenščina](#) [Srpski](#) [Suomi](#). The selected institution is "University of Limerick" with a "select another" button. A "Start page" link is also present. A section titled "If you encounter problems, then you can obtain direct assistance from your home organisation at:" provides contact information: WWW: <https://itd.servicedesk.ul.ie/default.html>, email: service.desk@ul.ie, and tel: +353 61 202999. The "Choose an installer to download" section lists operating systems: MS Windows 8, 8.1; MS Windows 7; MS Windows Vista; MS Windows XP SP3; Apple OS X Yosemite; Apple OS X Mavericks; Apple OS X Mountain Lion; Apple Mac OS X Lion; Apple iOS mobile devices; and Linux. The University of Limerick logo and name are displayed on the right. The footer contains the text "eduroam CAT - Release CAT-1.0.4 © 2011-13 DANTE Ltd. on behalf of the Gf3 and Gf3plus consortia" and the DANTE logo with the text "European Commission Communications Networks, Content and Technology".

Select your required operating system and click on save. Go to the location where you saved the file and double click on it. This will run up the CAT tool wizard which will configure your wireless profile.

Welcome to eduroam CAT

eduroam Configuration Assistant Tool

View this page in [Català](#) [Deutsch](#) [English\(GB\)](#) [Español](#) [Euskara](#) [Français](#) [Galego](#) [Hrvatski](#) [Italiano](#) [Norsk](#) [Polski](#) [Português](#) [Slovenčina](#) [Slovenski](#)

Selected institution: **University of Limerick** [select another](#)

If you encounter problems, then you can obtain direct assistance from you home organisation at:

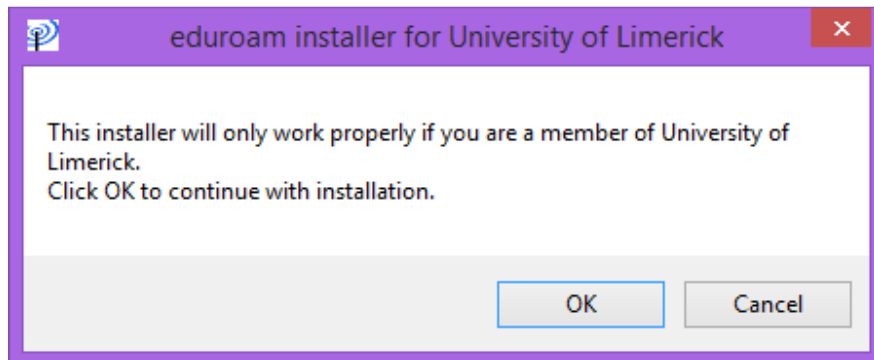
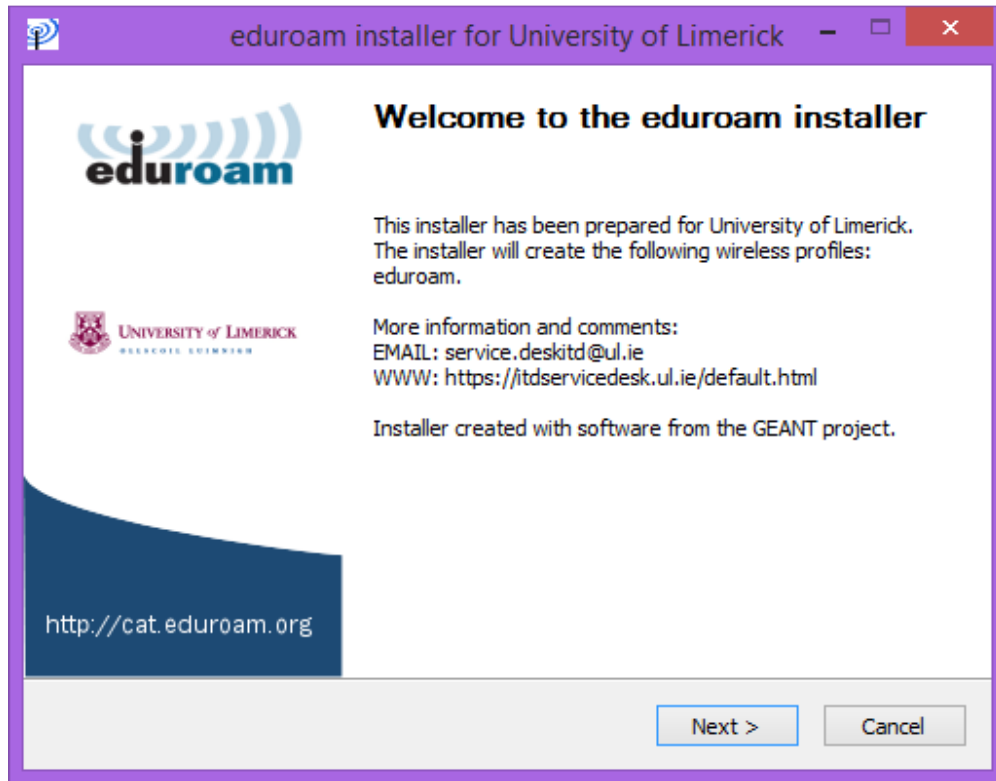
WWW: <https://itdservicedesk.ul.ie/default.html>

email: service.deskitd@ul.ie

tel: +353 61 202999

Choose an installer to download

	MS Windows 8, 8.1 i
	MS Windows 7 i
	MS Windows Vista i
	MS Windows XP SP3
	Apple OS X Yosemite i
	Apple OS X Mavericks i
	Apple OS X Mountain Lion i
	Apple Mac OS X Lion i
	Apple iOS mobile devices i
	Linux i




Enter in your credentials to connect to the Eduroam service.

This should be in the form firstname.lastname@ul.ie for staff members

And studentid@studentmail.ul.ie for ul students.

eduroam installer for University of Limerick

User credentials



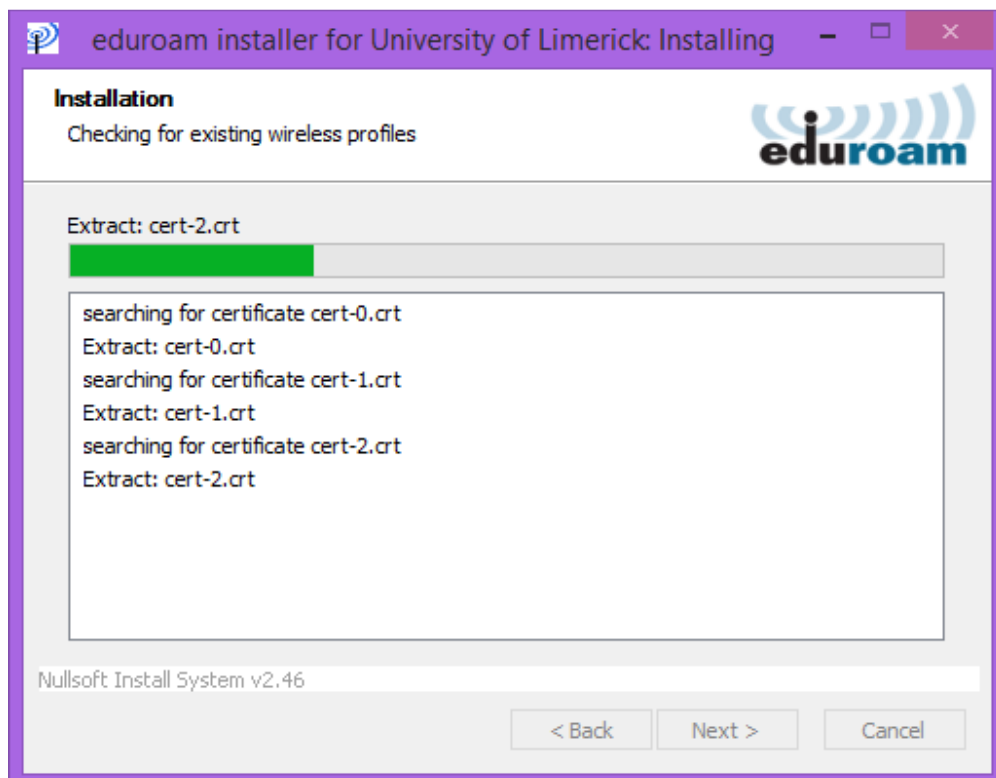
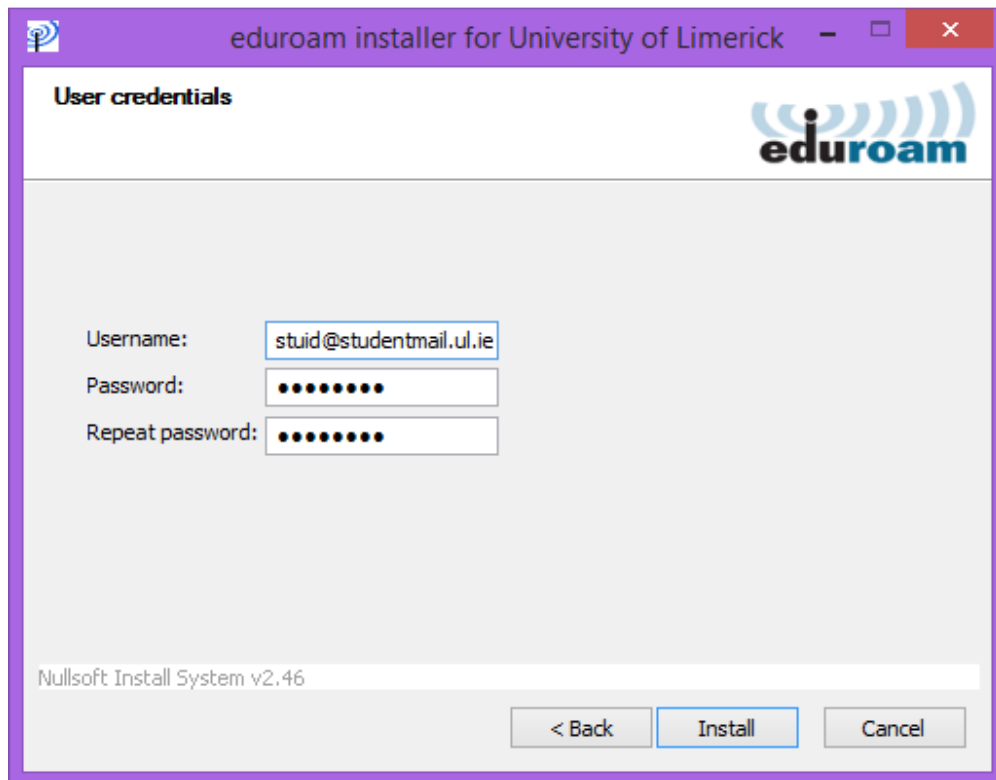
Username:

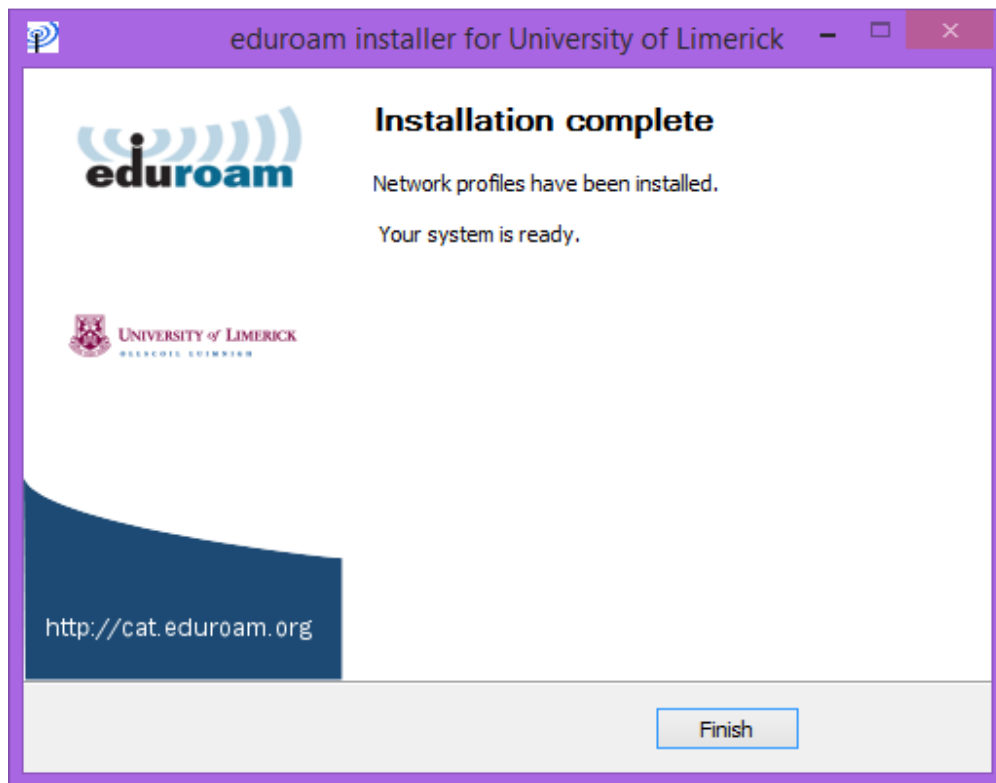
Password:

Repeat password:

Nullsoft Install System v2.46

< Back Install Cancel





Now your wireless card is configured to access the eduroam wireless service.